

# 46/former White Swan PH Church St

## Local Heritage Asset Register

Basford

HA93



<b>Status:</b>	Recommendation to add
<b>Age:</b>	Early to Mid-20th Century
<b>Conservation Area:</b>	No
<b>Date added to the list:</b>	
<b>Condition:</b>	Good

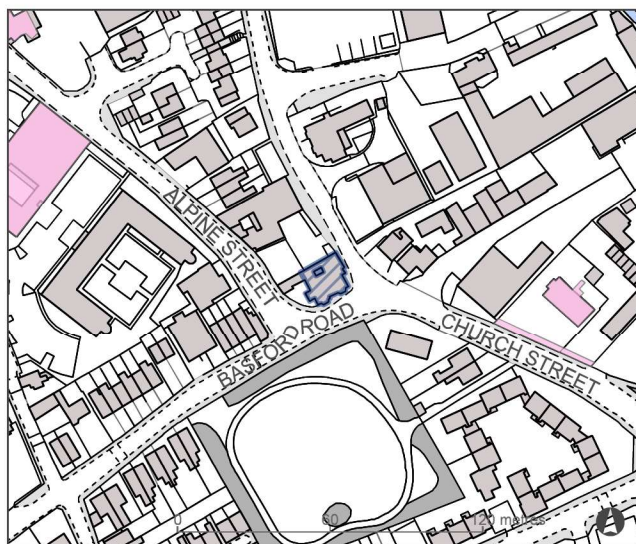
### Assessment against Local Criteria

1. Age: 1914 – 1960, with aesthetic value
2. Aesthetic value: a 1920s building combining mock Tudor timber framing with a green tiled façade to the ground level.
3. Landmark status: on the corner where Church Street, Alpine Street and Basford Road (formerly High Street) meet.

### Reason for Designation

A landmark building on a corner site in an historic area of Old Basford at the heart of the medieval village on high land. Evidential value for potential older fabric within, but the current building is a 1920s rebuild with tiled ground floor façade and mock Tudor timber frame above.

-  Local List Proposal
-  Grade II Listed Building



### Description

Landmark pub on corner site. WB Star & Hall, 1928 for the Home BC. Fine tiles frontage incorporating original pub sign.

# 46/former White Swan PH Church St

## Local Heritage Asset Register

Basford

HA93

### Additional Description:

The Swan Inn has occupied this site since at least the 1880s, but a pub may have been on the site for much longer. An alterations scheme by architect William Betts in 1905 reveals the original form and footprint was completely different to the building that stands today – a 1926 rebuild by well-known Nottingham architect W B Star & Hall.

Heritage category:	Building
Asset type:	Commercial
Original use:	
Current use:	House
Currently occupied:	Yes
Architect, style / material:	1926 WB Star & Hall
Condition:	Good

### Part of a group of heritage assets:

No

### Associated with historical events or people:

### Is it associated with any buried remains or archaeology? If so please describe:

### How is it of importance to the local community? :

<b>Selection Panel Date:</b>	<b>Date added to the list:</b>
08/01/2018	

# Building north of Lenton Hurst

## Local Heritage Asset Register Lenton & Wollaton East

HA141



<b>Status:</b>	Recommendation to add
<b>Age:</b>	Victorian (1837-1901)
<b>Conservation Area:</b>	No
<b>Date added to the list:</b>	
<b>Condition:</b>	Good

### Assessment against Local Criteria

1. Age: 1840-1914
2. Stables of Lenton Hurst
3. Well designed estate building

### Reason for Designation

Good example of stables to Lenton Hurst, which might be a candidate for national listing. Well designed and complimentary to the principal building.

-  Local List Proposal     Grade II Listed Building
-  Conservation Areas



### Description

Stables of Lenton Hurst presumably also by Arthur Marshall. Adding to the significance of Lenton Hurst. Designed in a similar and complimentary style.

# Building north of Lenton Hurst

## Local Heritage Asset Register

### Lenton & Wollaton East

HA141

Additional Description:

Heritage category:	
Asset type:	Houses
Original use:	
Current use:	Educational
Currently occupied:	
Architect, style / material:	Arthur Marshall
Condition:	Good

Part of a group of heritage assets:

Yes

Associated with historical events or people:

Is it associated with any buried remains or archaeology? If so please describe:

How is it of importance to the local community? :

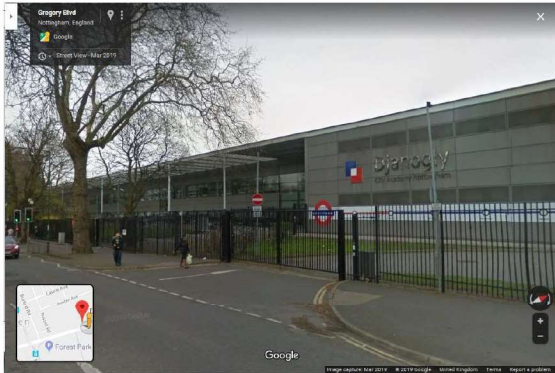
<b>Selection Panel Date:</b>	<b>Date added to the list:</b>
02/04/2019	

# Djanogly City Academy Gregory Boulevard

## Local Heritage Asset Register

### Berridge

HA192



<b>Status:</b>	Recommendation to add
<b>Age:</b>	Late 20th Century
<b>Conservation Area:</b>	No
<b>Date added to the list:</b>	
<b>Condition:</b>	Good

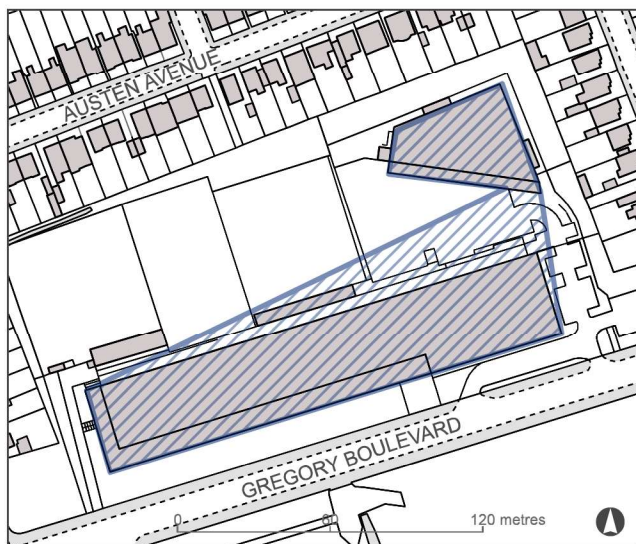
### Assessment against Local Criteria

1. Age: 1960+
2. High quality early City Academy by an internationally renowned architectural practice

### Reason for Designation

Very high quality designed early City Academy representing not only the ambitions of the Local Authority but also local philanthropy

### Local List Proposal



© Crown copyright and database right 2019. Ordnance Survey Licence number 100019317.  
Please note some of the images are taken from Google Street View. Map data©2019 Google.

### Description

Foster & Partners 2002-5. Early purpose-built Academy School sponsored by local textile entrepreneur Si Harry Djanogly. High quality school by an internationally important architectural practice.

Djanogly City Academy replaces Forest School, which was closed in 2002, and Djanogly City Technology College, which had become over-subscribed. The Academy is based on two sites and the new building contains teaching spaces for more than 800 students aged between 11 and 14. Despite the Academy's inner-city location and close proximity to a major road, the site is dominated by green space. The building is on the edge of Forest Recreation Ground, which once formed part of the ancient Sherwood Forest, and to the rear of the Academy, the former school was demolished to create playing fields. The Academy's design exploits this natural setting, with full height glazing to draw the landscape into the building and wide terraces, sheltered by a canopy of brise soleil.



**Nottingham**  
**City Council**

# Djanogly City Academy Gregory Boulevard

## Local Heritage Asset Register

### Berridge

HA192

#### Additional Description:

A simple rectangle on plan, the teaching spaces extend from a long central atrium, bounded at each end by double-height spaces, containing a restaurant, entrance hall, library and internet café. Breaking down the scale of the Academy into three 'houses', the elevated balconies define self-contained units, each with its own resource area and staff room. The theatre and sports facilities are grouped together in the east of the building, away from the teaching areas, to allow easy out-of-hours use by the local community. Classroom doors are glazed and an installation of coloured panels by artist, Sophie Smallhorn runs through the main circulation route, between each structural bay. The steel frame encloses a glass facade and internal walls are non load-bearing, so can be moved in future to suit changing requirements.

Heritage category:	Building
Asset type:	Education
Original use:	Educational
Current use:	Educational
Currently occupied:	Yes
Architect, style / material:	Foster & Partners 2002-5.
Condition:	Good

#### Part of a group of heritage assets:

#### Associated with historical events or people:

#### Is it associated with any buried remains or archaeology? If so please describe:

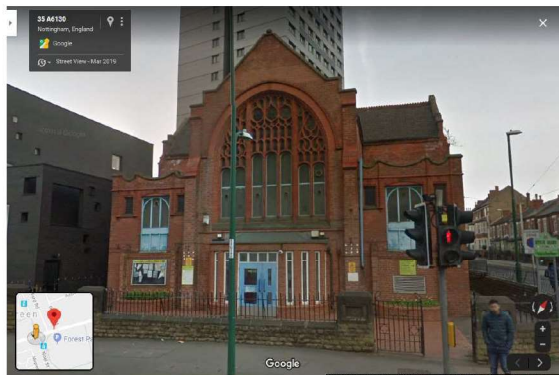
#### How is it of importance to the local community? :

<b>Selection Panel Date:</b>	<b>Date added to the list:</b>
05/11/2019	

# Former Methodist Chapel

## Local Heritage Asset Register Hyson Green & Arboretum

HA193



<b>Status:</b>	Recommendation to add
<b>Age:</b>	Victorian (1837-1901)
<b>Conservation Area:</b>	No
<b>Date added to the list:</b>	
<b>Condition:</b>	Fair

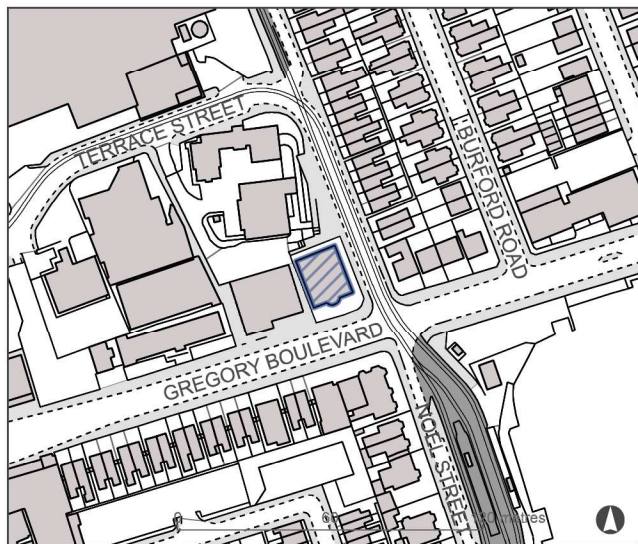
### Assessment against Local Criteria

1. Age: Victorian
2. Good example of a late Victorian Methodist Chapel with high aesthetic value

### Reason for Designation

Good example of a late Victorian Methodist Chapel with high aesthetic value

### Local List Proposal



### Description

Former Methodist Chapel, 1895-6 terracotta by Frederick Dixon of Oldham. Good example of a late Victorian small Methodist Church with very good tracery.

# Former Methodist Chapel

## Local Heritage Asset Register Hyson Green & Arboretum

HA193

### Additional Description:

Heritage category:	Building
Asset type:	Religious Sites
Original use:	Religious
Current use:	Health & Welfare
Currently occupied:	Yes
Architect, style / material:	1895-6 terracotta by
Condition:	Fair

### Part of a group of heritage assets:

Part of a group of high

### Associated with historical events or people:

### Is it associated with any buried remains or archaeology? If so please describe:

### How is it of importance to the local community? :

One of the key community buildings meeting the needs of diverse communities within Hyson Green

<b>Selection Panel Date:</b>	<b>Date added to the list:</b>
05/11/2019	



# Former Hyson Green Public Library

## Local Heritage Asset Register

### Hyson Green & Arboretum

HA194



<b>Status:</b>	Recommendation to add
<b>Age:</b>	Victorian (1837-1901)
<b>Conservation Area:</b>	No
<b>Date added to the list:</b>	
<b>Condition:</b>	Fair

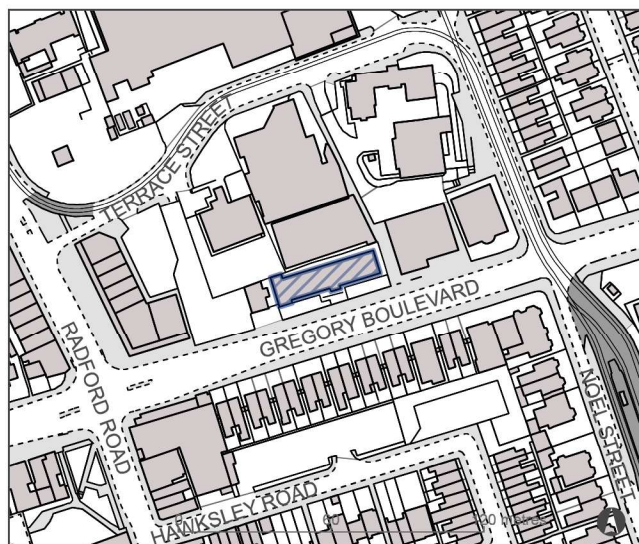
### Assessment against Local Criteria

- 1 Age: Victorian
- 2 High Aesthetic Value of the Jacobean revival style
- 3 Good quality materials and craftsmanship
- 4 Part of a group of civic buildings from the 1890s at the center of Hyson Green

### Reason for Designation

Good example of a Civic Building alongside a group of other buildings developed at the center of Hyson Green alongside Gregory Boulevard.

### Local List Proposal



### Description

Built in 1896 probably by the City Architect from Brick with Stone details in a Jacobean Revival Style.

# Former Hyson Green Public Library

## Local Heritage Asset Register

### Hyson Green & Arboretum

HA194

Additional Description:

Heritage category:	Building
Asset type:	Cultural & Entertainment
Original use:	Cultural or Entertainment
Current use:	Cultural or Entertainment
Currently occupied:	Yes
Architect, style / material:	
Condition:	Fair

Part of a group of heritage assets:

Part of a group of high

Associated with historical events or people:

Is it associated with any buried remains or archaeology? If so please describe:

How is it of importance to the local community? :

One of the key community buildings meeting the needs of diverse communities within Hyson Green

<b>Selection Panel Date:</b>	<b>Date added to the list:</b>
05/11/2019	